

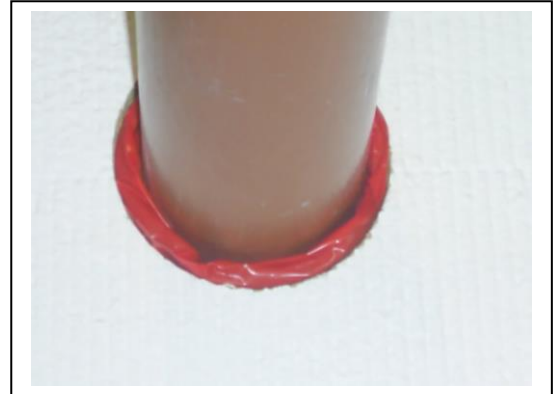


FPC(UK) Ltd, Stourdale Road, Portersfield Estate, Cradley Heath, B64 7BG  
 Tel:- 01384 633660 Fax:- 01384 633760  
[www.fpc-uk.com](http://www.fpc-uk.com) email: [sales@fpc-uk.com](mailto:sales@fpc-uk.com)

## IPW Range - Intumescent Pipe Wraps

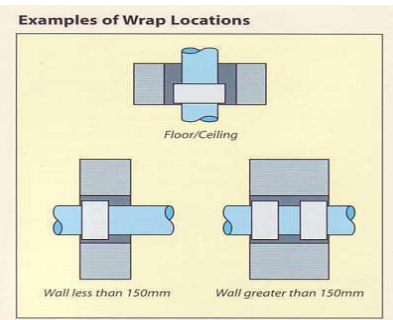
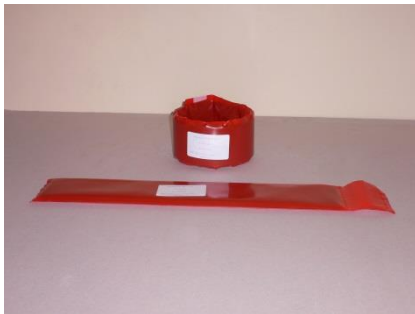
### Description

Up to 2 hours 30 minutes rating.  
 A flexible Intumescent sleeve designed to fit around plastic pipe work. The Intumescent material is enclosed in a plastic sleeve and secured by means of adhesive tabs.  
 Slide wrap up into slab or wall, if hole is larger once wrap is in place, backfill hole around pipe and wrap using either a fire mortar or cement based mix or suitable material to contain Intumescent to allow it to expand internally. For smaller gaps use Firesure® Intumescent Acrylic Mastic.



### Application

Suitable for use where plastic pipes pass through both solid walls and solid floor slabs. In a fire the Intumescent expands and closes the hole left by the collapsing pipe, so retaining the structures integrity. For Stud Partitioning Use UFS Range.



### Benefits

- Cost effective
- Easy to install
- Maintenance free
- Available in a range of sizes
- Unaffected by weather

Prod Ref	Pipe OD mm	Fire Rating	Certificate No
IPW55	55	150	(1) FEI/F98037
IPW082	82	150	(1) FEI/F98037
IPW110	110	150	(1) FEI/F98037
IPW160	160	100	(2) IF02047C

**Tested to BS: 476 Pt 20-23**

**For pipes up to 400mm<sup>Ø</sup> and up to 4 hours rating use IPWPR Range**

**For stud partitioning use UFS range – Universal Fire Sleeve/Wrap**

Health and Safety  
 No reportable hazard to health.